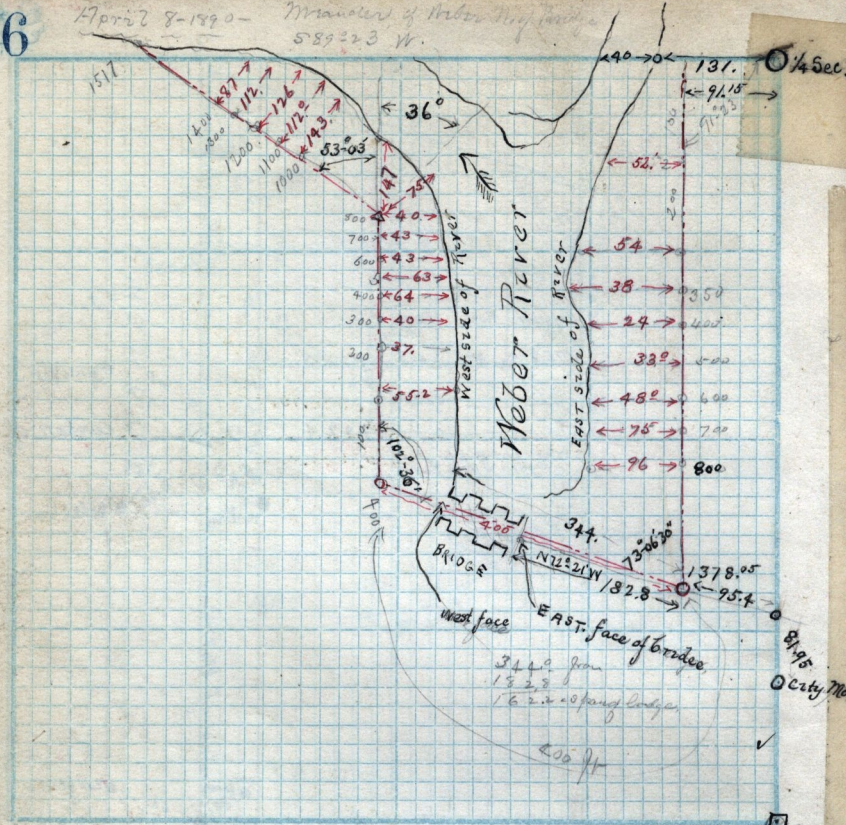


April 8-1890 - Meander of Weber River near bridge  
589-23 W.



S.E. Cor. Sec. 3  
T.6. N. R. 1

Scale: Chains per inch.

Meander of Weber River near Bridge in S. E. 1/4 Sec 30-T.6-N.R.1-W. April 8-1890. for E.J. Robins,

Random Run N. through Sec 19-T.7-N.R.1-W. Beg at U. point 14.95 ft S. of 1/4 cor. on S. line said Sec. 711. fence S.E. 792.5 ft fence S.E. 884. creek draining S.W. 1371. ft. fence 7098. fence S.E. 7149 fence S.W. 2678.66 hub at intersection of random line running E. through said Sec. N.E. angle being 89° 35' 11" mean of 6 readings

5320.76  
2689.14  
2681.20  
5320.7